

The definition of tapas is a selection of small plates to share, which originated in Spain.

At the Slieve Donard Resort & Spa, we believe the meaning of tapas is much deeper than that: for us it is all about the pleasure of savouring not only food but friendship and happiness.

Available 6pm to 10pm

## Fancy a snack?

£5 each

### Cured Meats & Cheese Selection

Parma Ham & Kearny Blue Cheese with Figs

Feta Cheese with Honey, sprinkled with Crawfords' Granola

Salted Almonds

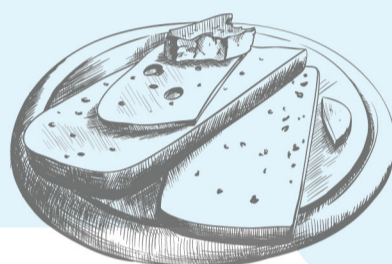
Homemade Hummus with Ditty's Oat Cakes

Marinated Anchovies

Bread Selection served with Tapenade,

Brighter Gold Rapeseed Oil and

Burren Balsamic Vinegar



St John's Point Lighthouse is located at the northern tip of Dundrum Bay and was built in 1844 under the direction of a George Halpin.

## Local Influence

£6 each

### Salt 'n' Chilli Squid

Tender Squid lightly coated with Gluten Free Crumb seasoned with Red Chillis and served with Napa Slaw, Chilli Jam & Garlic Aioli

### Walter Ewing's Glenarm Organic Smoked Salmon

With Red Onion, Capers & Cream Cheese on Crisp Flat Bread

### Garlic & Herb Portavogie Prawns

Tossed with Carnbrooke Chorizo

### Bruschetta

Fivemiletown Goats Cheese, Roast Red Onion, Beetroot and Rocket Salad

### Spicy Meatballs

With a Spiced Rich Tomato Ragù

### Salad of Chilli Pickled Orange, Avocado, Fennel and Fava Beans

### Lemon Scented Artichoke Hearts with Tomato Concasse

### Parmesan and Rocket Salad with Garlic Salsa Verdi

At 45 feet in height (a total of 62 feet above sea level) and fitted with a whale-oil burning lamp, St John's Point Lighthouse was later improved by increasing its height to 120 feet in 1893.

## Something Bubbly

### Mumm Cordon Rouge N.V.

A true classic with a unique character and irreproachably consistent taste. Made from black skinned grapes, it has a soft, round biscuit style.

£66.00

### Pannier Pink Rosé N.V.

Elegant aromas of red fruit, peaches & liquorice abound in this lively tinted cuvee. Beautifully balanced with remarkable finesse.

£71.00

### Prosecco Conti D'Arco, Italy

A fresh, pleasantly soft, lively, clean, dry and harmonious prosecco. Pale yellow in colour, fine bubbles, and a truly intense bouquet.

£33.00

### Sensi Gold Processo

Sublime Sparkling Wine in a distinctive gold bottle. Amazingly fruity, pleasantly refreshing and superbly balanced texture and a crisp, creamy perlage.

£40.00

### Sensi Pink Prosecco

Charming and seductive Sparkling Wine presented in a striking pink bottle. Made from Pinot Noir grapes grown in the Veneto region, it's fresh with floral and berries on the palate leading to a delicate and irresistible finish.

£40.00

### Teresa Rizzi Prosecco Snipe (20cl)

£11.00

## Our Whites...

### Vaja Pinot Grigio, Italy

Youthful and fruity, it is dry with a good balance of fruit and acidity and a long finish.

150ml 250ml Bottle

£6.00 £9.50 £27.00

### Promised Land Chardonnay, Clare Valley

Medium weight palate with fleshy yellow peach, subtle pineapple and citrus flavours.

£7.00 £12.00 £35.00

### St. Clair Sauvignon Blanc, Marlborough

A rich palate with passion fruit and blackcurrant flavours and a salty minerality. This wine has a silky, luscious texture and a long lingering finish.

£7.00 £11.00 £33.00

### Pazo da Bruxas Albarino, Rias Baxas

Rich and aromatic with lychee and tropical fruits, off dry and delicious.

£31.00

## Our Reds...

### Katnook Founders Block Cabernet Sauvignon, Coonawarra

This wine is dense in colour with rich flavours of prune and plum and very good balance.

150ml 250ml Bottle

£38.00

### St. Clair Pinot Noir, Marlborough

Medium bodied, with a soft, full palate, well balanced acidity, supple tannins and flavours that linger.

£7.00 £12.00 £35.00

### Andean Reserve Malbec, Argentina

An impressive Malbec with deep purple hues and concentrated fruit notes like blackberry and redcurrant.

£7.00 £12.00 £36.00

### Ibericos Crianza, Rioja

Toasty vanilla oak characteristics balanced with sumptuous strawberry and red cherry fruit flavours. A wine of velvety excellence.

£7.00 £11.00 £31.00

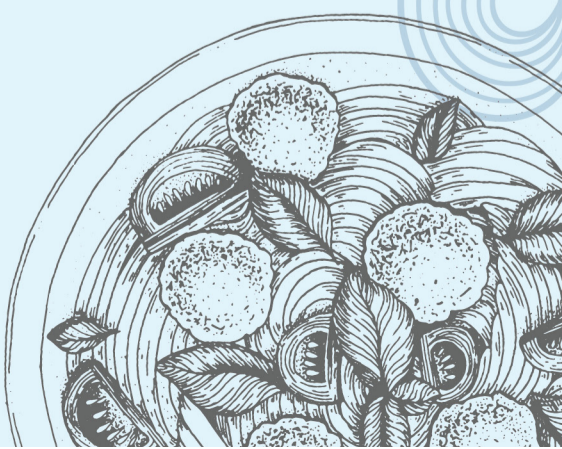
## Our Rosé...

### Moreau Rosé D'Anjou, France

A gentle, dry rosé with mouthwatering raspberry and cherry aromas. The palate is bright and fresh with the fruit balanced perfectly by the crisp in the finish.

150ml 250ml Bottle

£6.00 £9.50 £27.00







## Whitewater Brewery Craft Beers

Established on a third generation family farm, amidst the spectacular Mourne Mountain range, Whitewater Brewery offer some of the finest Irish craft beers. Hastings Hotels are proud to be working with Bernard Sloan and his Whitewater Brewery as part of our philosophy to showcase the best in local food and drink from Northern Ireland.

<b>Maggie's Leap</b> 4.7% ABV - A formidable India Pale Ale style beer brewed with Australian, New Zealand & American hops.	£5.50
<b>Belfast Black</b> 4.2% ABV - Roasted barley, rolled oats, chocolate & black malts combine to produce our Traditional Irish Stout brimming with flavour.	£5.50
<b>Belfast Ale</b> 4.5% ABV - Whitewater's aromatic russet ale is brewed with the addition of wheat and roasted barley	£5.50
<b>Belfast Lager</b> 4.5% ABV - Crisp & full flavoured this continental style premium lager is brewed with the finest Saaz hops, rich in aroma and taste	£5.50
<b>Copperhead</b> 3.7% ABV - A bright copper-coloured Pale Ale with a sessionable 3.7% ABV.	£5.50
<b>Hopplehammer</b> 6.0% ABV - A triple-hopped 6% abv India Pale Ale, delivering up-front American hops and rich fruit flavours.	£5.50

*The lighthouse is one of 70 lighthouses operated by the Commissioners of Irish Lights around the coast of Ireland and continues to provide a vital role in maritime safety today.*

## Local Spirits

<b>Shortcross Gin, Crossgar</b> At Rademon Estate Distillery, located only 20 miles from the Slieve Donard Resort and Spa, Shortcross are proud to be Northern Ireland's first Craft Distillery	£7.40
<b>Bushmills Irish Whiskey, Bushmills</b> Bushmills Original Irish Whiskey is a blend of triple distilled malt whiskey and a lighter grain whiskey You will notice it's rich, smooth warming taste almost instantly.	£5.00
<b>RubyBlue Vodka, Lisburn</b> RubyBlue Premium Vodka. Ireland's First Potato Distilled Vodka, Smooth ultra-Pure Vodka with subtle notes of vanilla and crisp apple. Buttery and well-rounded with just a little earthiness	£7.40

*The lighthouse first used gas powered lamps, then moved to paraffin and most recently to electricity in 1981, when it became an automated Lighthouse.*

## Lighthouse 'Keepers' Cocktails

<b>Lighthouse Bloody Mary</b> Rubyblue Vodka, Tomato Juice and traditional garnish	£10.00
<b>Bee's Knees</b> Shortcross Gin, Runny Honey, Lemon and Lime	£10.00
<b>Mimosa</b> Champagne and chilled Fresh Orange Juice	£10.00

*The original lighthouse was painted white. In 1902 three black bands were added. Its current markings of black with two yellow bands have been in place since 1954.*

## Soft Drinks & Mixers

We have a full selection of carbonated Soft Drinks. We stock the following:

Schweppes Tonic, Slimline Tonic, Soda Water, Ginger Ale, Bitter Lemon, Lemonade	£3.00
Fevertree Tonic, Light & Elderflower, Coca Cola, Diet Coke, Sprite, Sprite Zero,	£3.80
Britvic 55 Apple, Britvic 55 Orange, Fanta Orange	£3.00
330ml River Rock Still & Sparkling Water	£2.80
Fruit Juices	£2.80

*The distinctive colour scheme, black with two yellow bands, was painted in 1954 and the lighthouse is now an official listed building.*

## International Beers

<b>Corona, Mexico</b> - 4.5% ABV	£5.00
<b>Becks, Germany</b> - 4.8% ABV	£4.40
<b>Becks Blue (Non-alcoholic), Germany</b>	£4.40
<b>Budweiser, United States</b> - 4.8% ABV	£4.80

